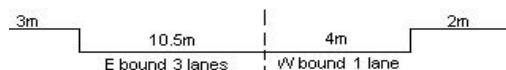
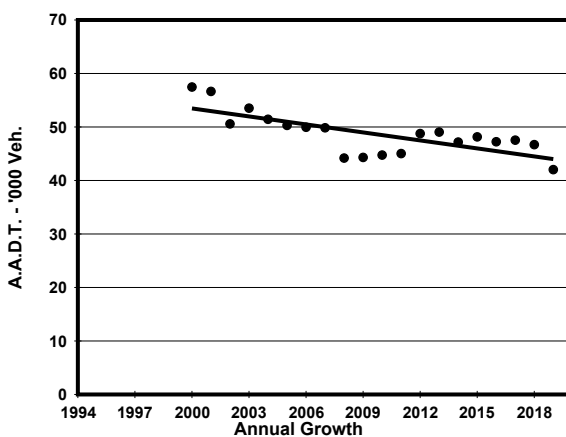
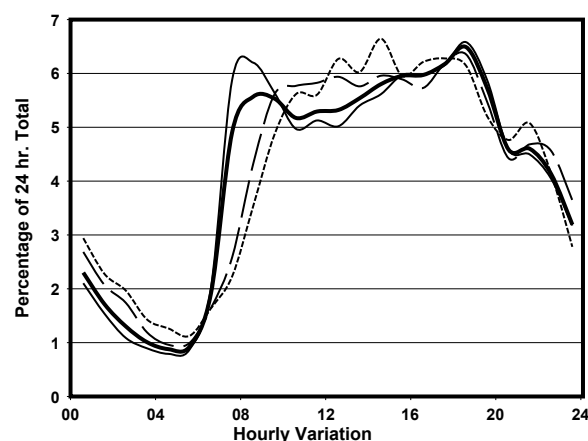
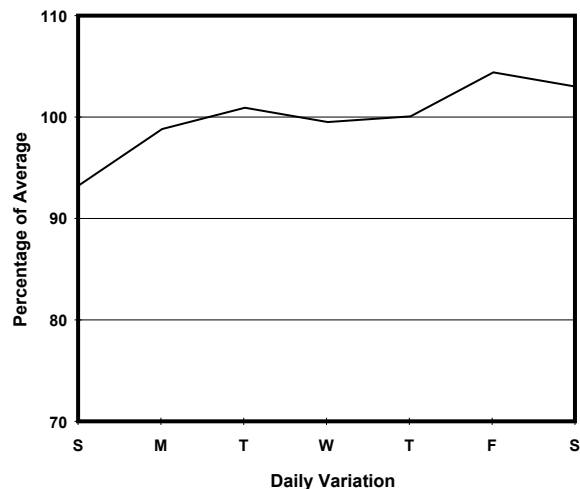
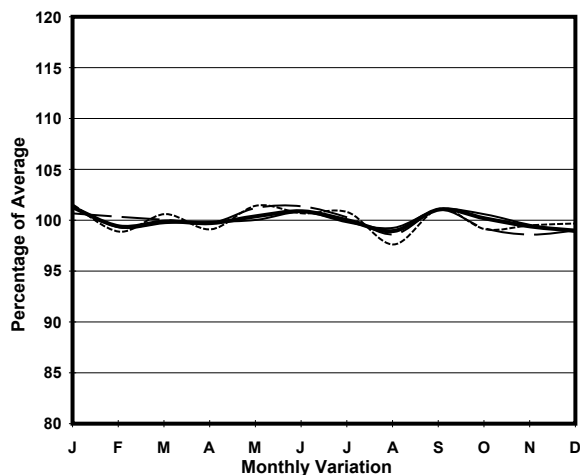


YEAR 2019
 COVERAGE (B) STATION 4202
 ROAD NETWORK MAJOR
 ROAD TYPE PRIMARY DISTRIBUTOR

LINK BOUNDARY ST (from TAI HANG TUNG RD to EMBANKMENT RD)



1. TRAFFIC FLOW VARIATION AND GROWTH



— All day — Mon.- Fri. Sat. - - - - - Sun.

2. TRAFFIC CHARACTERISTICS (BY DIRECTION)

Parameter	All - Day	Mon. - Fri.	Sat.	Sun.
EAST BOUND				
A.A.D.T.	35420	35420	37860	33870
R 12 / 24 - %	67.2	67.9	65.9	65.2
R 16 / 24 - %	86.3	87	85	84.1
AM Peak Hour	0900-1000	0800-0900	0900-1000	0900-1000
One-way flow at AM peak hour	2010	2200	2120	1650
T - % (AM)	-	7.1	-	-
PM Peak Hour	1800-1900	1800-1900	1800-1900	1700-1800
One-way flow at PM peak hour	2250	2270	2430	2150
T - % (PM)	-	4.2	-	-
Prop.of commercial vehicles - 16 hr.	-	5.3	-	-
WEST BOUND				
A.A.D.T.	6610	7080	5560	5470
R 12 / 24 - %	70.5	71.8	66.2	66.6
R 16 / 24 - %	89.5	90.3	85.7	87.7
AM Peak Hour	0700-0800	0700-0800	0900-1000	0900-1000
One-way flow at AM peak hour	480	640	320	270
T - % (AM)	-	11.3	-	-
PM Peak Hour	1800-1900	1800-1900	1700-1800	1800-1900
One-way flow at PM peak hour	470	520	350	370
T - % (PM)	-	3.3	-	-
Prop.of commercial vehicles - 16 hr.	-	5	-	-

3. OTHER INFORMATION AND COMMENT

4. Vehicle classification and occupancy - Monday to Friday

Time		Class of vehicle									
		Motor Cycle	Private Car	Taxi	Private LB	PLB	Goods veh.		Non Fr. Bus	Fr. Bus	
							Light	M & H		SD	DD
0700-0800	Pro	5.3	30.7	26.1	10.1	5.1	10.5	2.0	7.6	0.4	2.2
	Ocp	1.1	1.6	2.3	7.9	14.2	1.7	1.2	20.9	28.3	44.8
0800-0900	Pro	1.7	62.6	10.8	3.0	4.3	10.5	2.3	3.0	0.3	1.4
	Ocp	1.0	1.4	2.1	7.0	12.6	1.9	1.4	13.1	24.3	44.8
0900-1000	Pro	2.0	49.7	19.2	2.6	4.3	17.3	1.7	1.5	0.2	1.6
	Ocp	1.1	1.4	2.0	3.3	8.8	1.6	1.6	6.8	14.4	25.6
1000-1100	Pro	2.5	35.4	26.3	1.7	5.7	22.8	2.2	1.2	0.3	2.0
	Ocp	1.0	1.4	1.8	2.4	6.2	1.6	1.6	7.9	12.7	21.1
1100-1200	Pro	4.1	38.6	22.5	3.8	4.4	21.2	1.3	2.2	0.2	1.6
	Ocp	1.0	1.5	1.9	2.9	8.9	1.5	1.4	12.1	9.7	30.3
1200-1300	Pro	1.7	45.7	23.3	2.6	4.4	17.5	1.2	1.7	0.2	1.8
	Ocp	1.1	1.4	1.8	3.4	7.7	1.6	1.6	4.3	19.2	34.7
1300-1400	Pro	4.4	40.5	19.6	4.0	3.2	21.6	1.2	3.7	0.2	1.5
	Ocp	1.1	1.5	2.1	4.4	10.9	1.6	1.3	8.9	15.9	43.3
1400-1500	Pro	2.3	50.1	19.2	2.6	2.4	17.7	1.9	1.6	0.3	2.0
	Ocp	1.0	1.6	2.0	2.4	10.8	1.6	1.4	2.3	15.0	41.0
1500-1600	Pro	2.3	50.4	18.5	6.0	3.0	14.9	0.9	2.1	0.2	1.7
	Ocp	1.1	1.4	1.9	11.4	9.5	1.5	1.6	13.4	17.3	44.7
1600-1700	Pro	2.9	46.7	22.3	3.4	3.3	15.6	1.6	2.2	0.2	1.9
	Ocp	1.0	1.4	1.8	4.3	13.7	1.4	1.7	5.4	22.3	45.6
1700-1800	Pro	3.7	54.2	20.5	1.4	3.2	12.9	0.8	1.1	0.2	1.9
	Ocp	1.0	1.5	1.8	2.8	16.0	1.4	1.7	4.0	18.6	51.4
1800-1900 Peak hour	Pro	5.3	55.6	19.0	0.8	3.7	11.6	0.8	1.0	0.2	2.0
	Ocp	1.1	1.5	2.1	3.0	15.7	1.4	1.2	4.0	18.7	63.1
1900-2000	Pro	4.4	59.4	21.8	0.7	4.2	6.7	0.3	0.4	0.3	1.8
	Ocp	1.1	1.5	2.0	1.2	15.8	1.8	1.5	1.3	14.4	56.4
2000-2100	Pro	4.0	55.3	27.6	0.3	4.0	5.3	0.3	0.7	0.3	2.2
	Ocp	1.0	1.5	2.1	1.0	11.4	1.4	1.0	12.5	11.8	39.7
2100-2200	Pro	3.7	49.3	32.9	0.0	4.4	5.9	0.5	0.7	0.3	2.3
	Ocp	1.2	1.5	2.3	0.0	9.8	1.6	2.0	1.0	6.5	48.9
2200-2300	Pro	1.8	52.9	33.5	0.2	3.5	3.5	0.4	0.8	0.4	3.1
	Ocp	1.0	1.7	2.2	1.0	10.9	1.4	1.5	1.0	6.0	47.4
16 hours	Pro	3.3	48.9	22.1	2.7	3.9	13.8	1.2	1.9	0.3	1.9
	Ocp	1.1	1.5	2.0	5.7	11.3	1.6	1.5	10.6	15.9	43.4

Legend: Pro. Proportion of vehicles in % (Sum may not add up to 100% due to figure rounding)*

Ocp. Average occupancy of vehicles including both driver and passengers*

M&H Medium and Heavy

* All traffic data are collected from combined bounds